

# INFERENCES USING LITERATURE

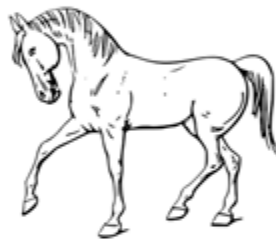
PRINT AND  
DIGITAL

for Google  
Classroom™

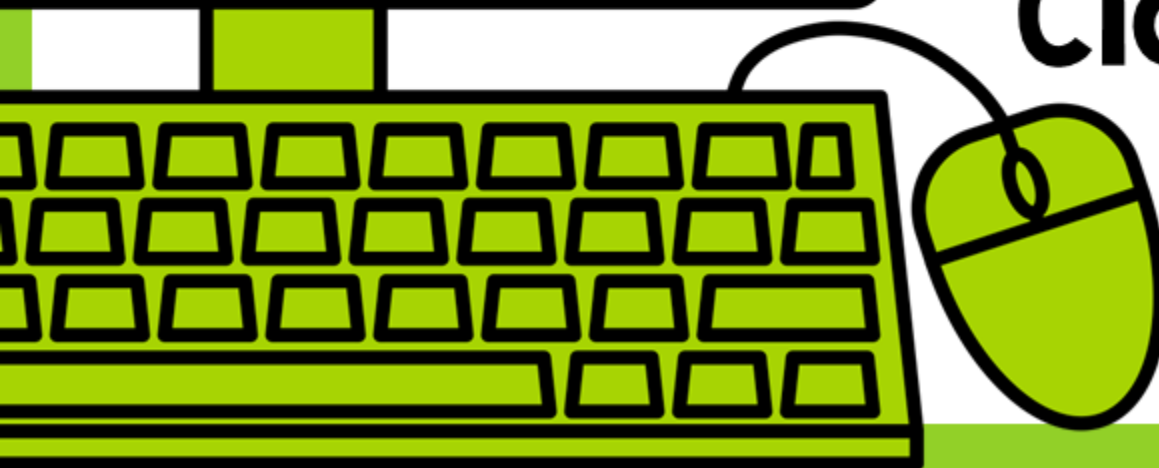
## The Horse

China

Once there lived a young man in the northern frontier of China. This young man had a father who was skilled at interpreting events. One day for no reason, the young man's only horse ran away. The horse kept running until he ran to the nomads, who lived across the border. All of the young man's friends tried to comfort him but the man's father said, "What makes you so sure this isn't a blessing?"



A few months later, the horse came home, accompanied by a splendid nomad stallion. Everyone congratulated the young man, but his father said, "What makes you so sure that this isn't a disaster?" By and by, the young man's household became richer because of the stallion, which he loved to ride.



3rd - 5th  
Grades

The TEACHER next Door

# 6 PASSAGES WITH QUESTIONS

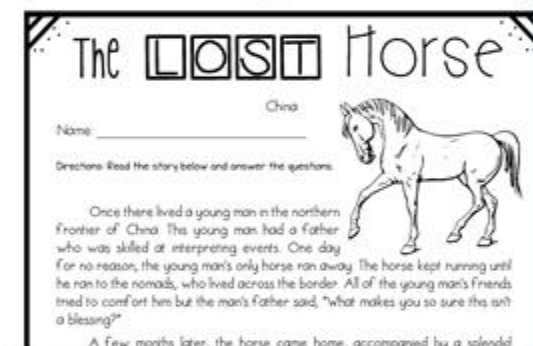
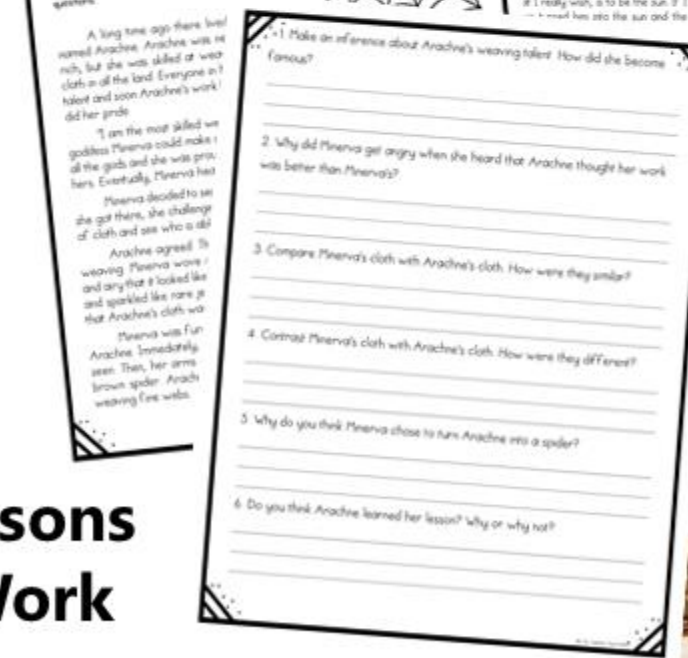
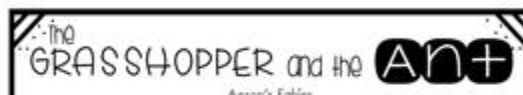
Aesop's Fables, Folktales Around the World, and a Greek Myth

Print version has open-ended questions

Digital version is self-grading in Google Forms™

PERFECT FOR:

- Whole class lessons
- Independent Work
- Guided Reading
- Small groups/partners



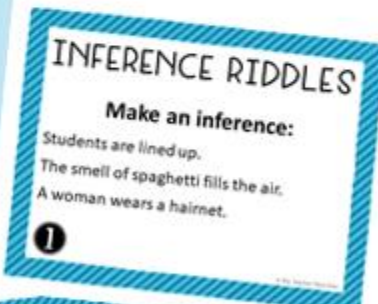


# 2 SETS OF 32 TASK CARDS

Digital version is self-grading in Google Forms™

“Inferences Using  
Pictures” Task Cards

“Inference Riddles”  
Task Cards



**Works well for:**

- **Small groups/partners**
- **Independent Work**
- **Beginning of the unit**

# INFERENCE ACTIVITIES

## Inferences from a Shopping Bag Game



**MYSTERY BOX HOMEWORK**

Name: \_\_\_\_\_  
Date: \_\_\_\_\_

**TOP SECRET**

**Directions:**  
Your job is to go home and find something that will fit inside a small box (shoebox size or smaller). This item must not be long and must be able to fit in a box. Do NOT tell any classmates what you selected for the box, as it is a secret for this activity.  
After selecting an item, write down four clues on the paper below. Try to make these clues somewhat challenging but not impossible. The clue is for your classmates to use these clues to make an inference about what's in the box. Bring your item in a box on the due date and make sure the box is closed so the item cannot be seen. You will be reading your clues to the class and will be sharing your item on the due date.

**MY CLUES:**

- \_\_\_\_\_
- \_\_\_\_\_
- \_\_\_\_\_
- \_\_\_\_\_



## Top Secret Homework

## Inference Windows

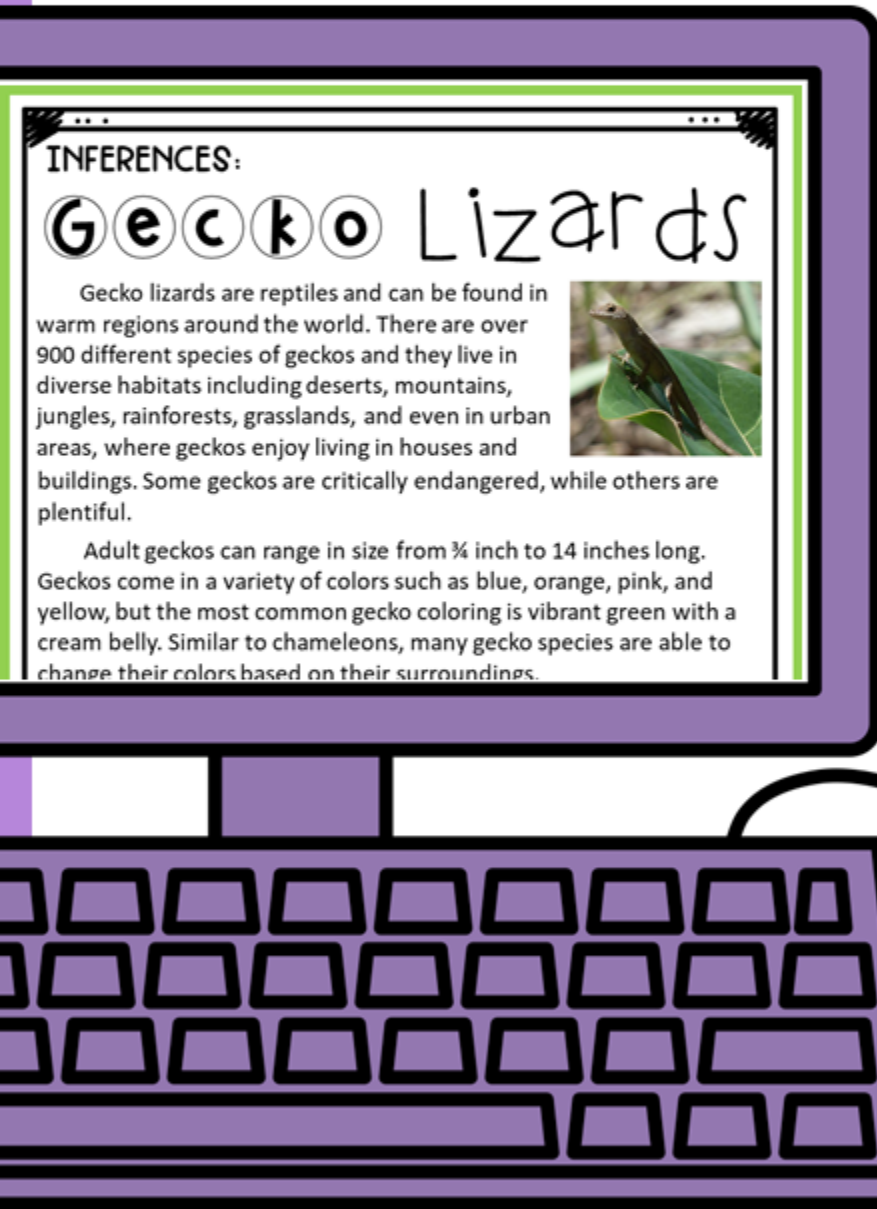
## CAN BE USED FOR:

- Literacy Centers
- Small Groups/Partners
- Independent Work



# INFERENCES

USING INFORMATIONAL TEXT



## INFERENCES:

### Gecko Lizards

Gecko lizards are reptiles and can be found in warm regions around the world. There are over 900 different species of geckos and they live in diverse habitats including deserts, mountains, jungles, rainforests, grasslands, and even in urban areas, where geckos enjoy living in houses and buildings. Some geckos are critically endangered, while others are plentiful.



Adult geckos can range in size from  $\frac{3}{4}$  inch to 14 inches long. Geckos come in a variety of colors such as blue, orange, pink, and yellow, but the most common gecko coloring is vibrant green with a cream belly. Similar to chameleons, many gecko species are able to change their colors based on their surroundings.

PRINT AND  
DIGITAL

for Google  
Classroom™

4th/5th  
Grades

The TEACHER next Door

# 7 PASSAGES AND QUESTIONS

**Comprehension questions: Open-ended and Multiple choice**

**Digital comes in Google Forms™ and are self-grading!**

**Includes Historical, Scientific, and Technical Texts**

**WORKS WELL FOR:**

- Independent Work**
- Small groups/partners**
- Guided Reading**

**INFERENCES**  
**Pony Express Riders**

Name: \_\_\_\_\_


Directions: Read the information below and answer the questions.

The Gold Rush of the mid 1800's caused hundreds of thousands of people to move out west to California in search of fortune. The problem that this created for people in the United States, was that there was no fast way to get mail across the new wilderness. The Pony Express was established to provide speedy mail delivery over the two thousand mile route that stretched from St. Joseph, Missouri to Sacramento, California.

Want ads were placed for riders, such as the one from a San Francisco newspaper in March 1860, when the Pony Express was just beginning to hire riders. "WANTED: young, skerry, verry fellows, not over eighteen. Must be expert riders, willing to risk death daily. Drivers preferred. Wages \$25 a week. Apply, Central Overland Express, Alta Bldg., Montgomery St." Despite the dangers, hundreds of young men applied to deliver mail on the Pony Express.

Pony Express Riders would travel 10 - 15 miles at a time, until they reached a relay station, where they would change horses. After 75 - 100 miles, the riders would stop at a horse station to rest and a new rider would put the mail on the specially built lightweight saddle of a fresh horse and continue to ride.

Although being a Pony Express rider may sound exciting, it was far from glamorous. As rider William Campbell said, "Riding express had more hard work than fun in it." One of his recollections his route through Nebraska: "Due to the mercury around zero, I could fall where the trail lay only by watching the fall waste on either side and often had to get off and load my horse." Riders also faced other dangers on the trail, such as bandits and bad weather caused many riders to quit. Riders also faced a conflict with bandits or Native Americans and angry Native American groups. Riders were advised never to start a conflict with bandits or Native Americans but to escape by horseshoe whenever possible. They were not to fire their guns except as a last resort to protect themselves and the mail.



1. Which event caused thousands of people to move out west?

2. Why was it so important to get mail delivered more quickly to and from California?

3. Why do you think the ads placed for Pony Express Riders asked for "young, skerry, verry fellows"?

4. Which two parts of the ad imply that being a rider was a dangerous thing to do?

5. About how many miles would a rider travel until he would stop to rest?

6. Explain how William Campbell could follow the trail in heavy snow.

Why do you think bandits would often attack Pony Express Riders?

What caused the end of the Pony Express service?

What part of the text gave you the idea?

**THE GRIZZLY BEAR**

Grizzly bears can be found in a variety of habitats. From dense forests to meadows, open plains and arctic tundra. In North America, grizzly bears can be found in western Canada, Alaska, Wyoming, Montana, Idaho, with a few remaining in Washington State. Although grizzly bears were once plentiful in much of western North America and the Great Plains areas, when pioneers came in the 1800's, they wiped out much of the grizzly bear population and now their numbers have dwindled to about 1,400. Currently, the grizzly bear is a protected species under the Endangered Species Act.

Grizzly bears are large animals and stand as tall as 8 feet high and weigh up to 800 pounds. They usually have dark brown fur, although it can be light cream to black. The long "guard hairs" on their backs and shoulders are white-tipped, or grizzled, which gives them their name.

A grizzly bear's body is well-adapted to survive seasonal changes. During warmer months, they eat an enormous amount of food (up to 40 pounds a day) so they can live off their body fat during winter. Grizzly bears are omnivores and will eat almost anything including nuts, fruit, leaves, roots, fungi, insects, and a variety of animals including salmon and other fish, rodents, sheep, moose, and elk. Their muscular back and other fat are available in the bear's environment.

When fall comes, grizzly bears dig dens in the sides of hills. Their muscular back and long claws (two to four inches) help grizzly bears to be excellent diggers. Once cold weather arrives, the bears settle into their dens to hibernate for the winter. This sleep like long slabs (two to four inches) help grizzly bears to be excellent diggers. This sleep like weather arrives, the bears settle into their dens to hibernate for the winter. This sleep like slows down the bear's heart rate (from 40 beats per minute to 8) and allows the bear to conserve energy.

Female grizzly bears can have babies when they are four or five years old. The mother bear is pregnant from 180-270 days, and will give birth to two or three cubs of their winter hibernation. The tiny cubs (usually two of them) are born blind, hairless, and toothless. They snuggle up to their mother and nurse for several months until spring grows teeth and fur. The mother bears are fierce protectors of their babies and care for them until they are old enough to live on their own.

The mother bears are fierce protectors of their babies and care for them until they are old enough to live on their own. The mother bears are fierce protectors of their babies and care for them until they are old enough to live on their own. The mother bears are fierce protectors of their babies and care for them until they are old enough to live on their own. The mother bears are fierce protectors of their babies and care for them until they are old enough to live on their own. The mother bears are fierce protectors of their babies and care for them until they are old enough to live on their own. The mother bears are fierce protectors of their babies and care for them until they are old enough to live on their own.



Name: \_\_\_\_\_

! The author stated that Grizzly Bears may be found in a variety of habitats. Knowing this, make an inference: which trait best describes grizzly bears as a species? They are:  
A. Able to camouflage well  
B. Flexible or adaptable  
C. Dangerous predators

2. Make an inference. Why do you think pioneers wiped out much of the grizzly bear population?  
A. They were afraid of them and the bears killed their livestock.  
B. They wanted bearskin rugs for their cabins.  
C. They wanted to be seen as skilled hunters.

3. The author stated that, "Currently, the grizzly bear is a protected species under the Endangered Species Act." Why do you think the bear is now a protected species?  
A. People feel sorry for them.  
B. People want more of them to live so they can put them into zoos.  
C. People realize that they are an important part of the food chain.

4. In the third paragraph, the author stated that, "The bear's diet depends solely on the kinds of foods that are available in the bear's environment." What does this mean?  
A. Bears eat whatever they can find in any area.  
B. Bears are picky eaters and will keep traveling until they find their favorite foods.  
C. Bears always stay in one spot, so they can eat what is there.

5. The passage stated that mother bears protect their cubs, but father bears may eat them. Make an inference. Why do mother bears protect them and not father bears?  
A. The father bears may not realize they are family.  
B. Protecting bear cubs is one of the female bear's instincts.  
C. Female bears are just nicer than males.

# 2 SETS OF TASK CARDS

Digital versions are self-grading in Google Forms™

- 32 "Picture Inference" Task Cards
- 32 "What is it?" Task Cards

Can be used for:

- Small groups/partners
- Independent Work
- Whole Class Games



# INFERENCE ACTIVITIES

- What's in \_\_\_\_\_'s Purse/Bag
- Secrets from the Trash
- Top Secret Inference Homework
- Inference Windows

**WHAT'S IN MISS \_\_\_\_\_'S BAG?**  
An Inference Activity

Directions: Make inferences about what is inside your teacher's purse. Then write down why you made that inference. After you record your inferences, your teacher will reveal what is actually inside her purse. Then write whether your prediction was correct or not.

My Inference	Why did you make this inference?

**SECRETS FROM THE TRASH:**  
an inference activity

Name: \_\_\_\_\_

Directions: You will be given bags of "clean" trash to look through to make inferences. You and your group will make inferences about the family based on their trash. For example, if you find an empty doggie treat bag, you might infer that the family has a dog. Write down the clues and the inferences you make below.

TRASH ITEM	INFERENCE

**TOP SECRET:**  
Inference Bag Homework

Name: \_\_\_\_\_

Due: \_\_\_\_\_

Directions: Your job is to go home and find something that will fit inside a brown lunch bag. This item must not be hung and must be school appropriate. Do NOT tell any classmates what you selected for the bag, so it can be kept a secret for this activity. After selecting an item, write down four clues on the paper below. Try to make these clues somewhat challenging but not impossible. The idea is for your classmates to use these clues to make an inference about what's in the bag. Bring your item in a brown lunch bag on the due date and make sure the bag is closed so the item cannot be seen. You will be reading your clues to the class and will be showing your item on the above date.

My clues:

1. \_\_\_\_\_
2. \_\_\_\_\_
3. \_\_\_\_\_
4. \_\_\_\_\_

## IDEAL FOR:

- Independent Work
- Homework
- Small groups/partners



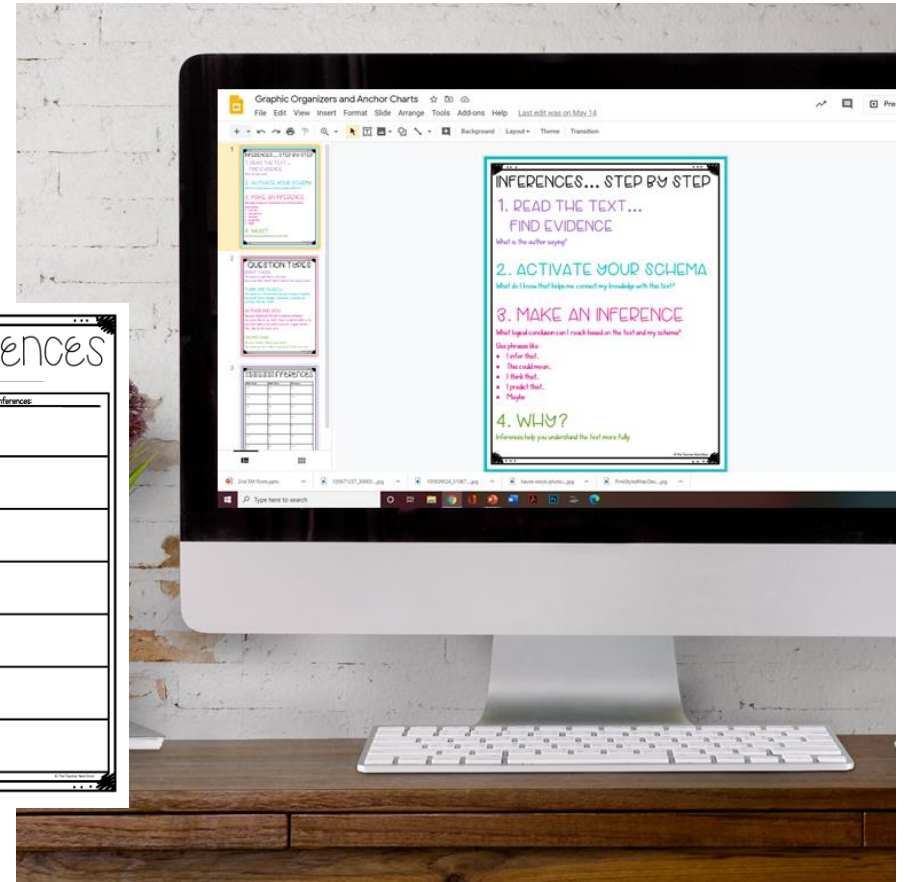
# GRAPHIC ORGANIZERS, HANDOUTS, AND POSTERS

Shrink the inference reference sheet to add to interactive notebooks

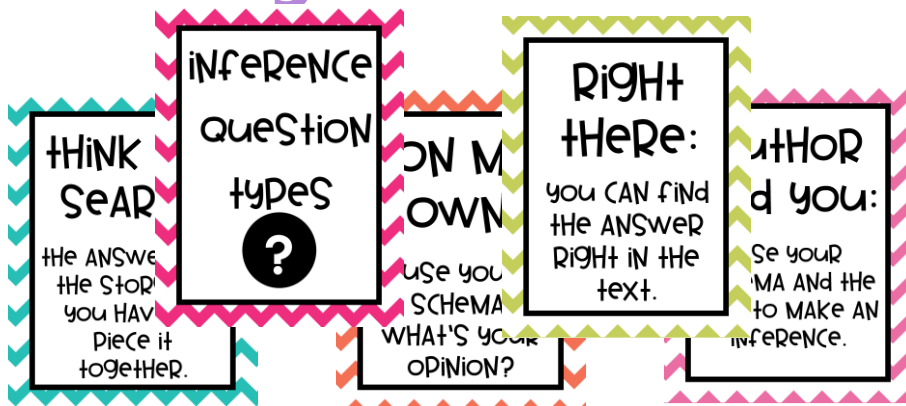
Can be used with any nonfiction text



INFERENCES		
Name: _____		
What I Read	What I Know	Inferences



Posters are a great teaching tool!



Ideal For:

- Interactive notebooks
- Independent Work
- Small groups/partners

# LOOKING FOR MORE Reading Resources?

CLICK [HERE](#) to take a look!

CLICK [HERE](#) to take a look!

Reading Bundle

main Idea  
Messages, Text Details, Analyze Organizers, & Activities  
PRINT AND DIGITAL  
For Google Classroom™

COMPARE AND CONTRAST  
Messages, Text Details, Analyze Organizers, & Activities  
PRINT AND DIGITAL  
For Google Classroom™

elements of POPULAR, DRAMA, and PROSE  
Messages, Text Details, Analyze Organizers, & Activities  
PRINT AND DIGITAL  
For Google Classroom™

Theme  
Messages, Text Details, Analyze Organizers, & Activities  
PRINT AND DIGITAL  
For Google Classroom™

INFERENCES USING LITERATURE  
Messages, Text Details, Analyze Organizers, & Activities  
PRINT AND DIGITAL  
For Google Classroom™

INFERENCES USING INFORMATIONAL TEXT  
Messages, Text Details, Analyze Organizers, & Activities  
PRINT AND DIGITAL  
For Google Classroom™

Text Evidence  
Using INFORMATIONAL TEXT  
Messages, Text Details, Analyze Organizers, & Activities  
PRINT AND DIGITAL  
For Google Classroom™

Informational Text STRUCTURES  
Messages, Text Details, Analyze Organizers, & Activities  
PRINT AND DIGITAL  
For Google Classroom™

CHARACTERS, SETTINGS, AND EVENTS  
Messages, Text Details, Analyze Organizers, & Activities  
PRINT AND DIGITAL  
For Google Classroom™

CAUSE AND EFFECT USING INFORMATIONAL TEXT  
Messages, Text Details, Analyze Organizers, & Activities  
PRINT AND DIGITAL  
For Google Classroom™

10 UNITS  
FOR 4TH - 5TH  
GRADES  
The TEACHER next Door

DIGITAL READING BUNDLE:  
20 READING UNITS: FICTION AND NONFICTION

DIGITAL READING BUNDLE: for GOOGLE SLIDES™  
FICTION

DIGITAL READING BUNDLE: for GOOGLE SLIDES™  
NONFICTION

4th Grade  
The TEACHER next Door

DIGITAL READING BUNDLE:  
20 READING UNITS: FICTION AND NONFICTION

DIGITAL READING BUNDLE: for GOOGLE SLIDES™  
FICTION

DIGITAL READING BUNDLE: for GOOGLE SLIDES™  
NONFICTION

5th Grade  
The TEACHER next Door

CLICK [HERE](#) to take a look!